

How to Enter Volunteer Data in NRM Assessment

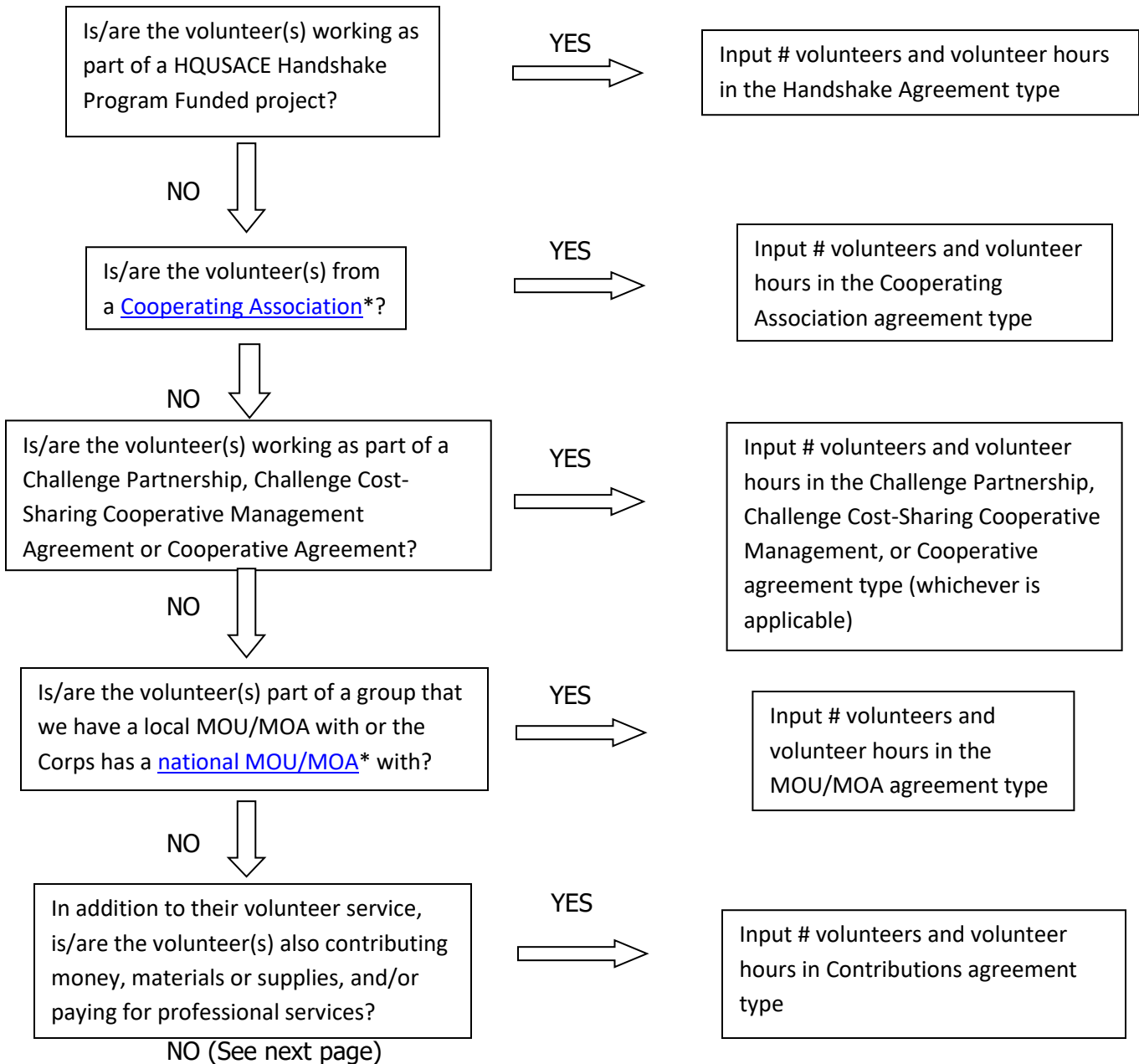
Step 1. NRM Assessment Tool NRM Module, Step 1- Volunteer Information

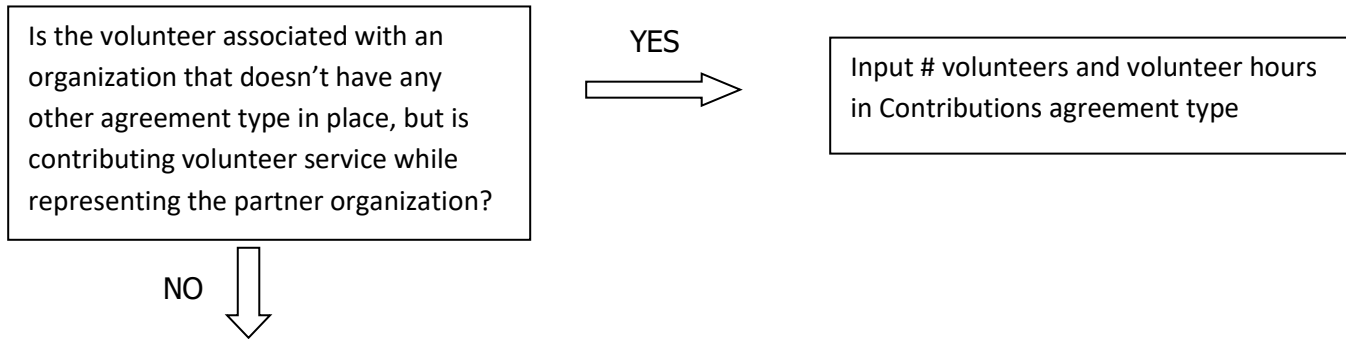
Enter ALL volunteer hours in this section of the NRM Assessment Tool. This is where you will capture the total number of volunteers, total hours of volunteer service (which will auto-calculate the total value of the service), and total incidental expenses reimbursed to all volunteers for the FY.

Step 2. NRM Assessment Tool Partnership Module

In addition to gathering information about the overall number of volunteers, hours, and value, we are also trying to capture more detailed data about volunteers that are part of a partnership. Some volunteers such as camp hosts, gate attendants, and other individuals who volunteer may only be counted in the NRM Module update. Other volunteers that are part of a partner organization should also have their hours counted in the Partnership Module update.

Please use the flow chart below to determine whether to count a particular individual volunteer's or group of volunteers' hours in the Partnership Update section of OMBIL.





If you answer No to all of the questions above, the data for these volunteers will ONLY be input in the NRM Module Update section of NRM Assessment, not under the Partnerships Module. If you answer Yes to any of the questions above, input the data into the first category with a Yes answer starting from the top down. Some volunteers may fit into multiple categories, but you should input the data in the first applicable category encountered in the flow chart.

Example 1: A volunteer group from IMBA (International Mountain Biking Association) may provide service to the Corps as part of a Challenge Partnerships Agreement, but they are also part of a national MOU. Because the Challenge Partnership agreement is an agreement for a limited, specific period of time and project, the volunteer hours for the particular project in the agreement should be input in the Challenge Partnership category instead of the MOU. If IMBA also volunteers hours not related to the Challenge Partnership Agreement, those additional hours would be input separately in the MOU category.

Example 2: Volunteers from a Cooperating Association, such as the Friends of Raystown Lake provide services for a project that is part of a Handshake Agreement. These hours should be input in the Handshake category instead of the Cooperating Association category, because the Handshake agreement is for a specific project. Additional hours volunteered by Association members such as working in a bookstore, creating interpretive materials, or managing a campground should be captured in the Cooperating Association category if they are not specifically associated with the Handshake project.

*See [NRM Gateway MOU/MOU page](#) for list of national organizations with MOU/MOA and [NRM Gateway Cooperating Association page](#) for list of associations in NRM Assessment/OMBIL. There is a pick-list of national organizations and cooperating associations already in the NRM Assessment Tool. If you have a new cooperating association that is not on the list, please contact Heather Burke the get it added to the system.